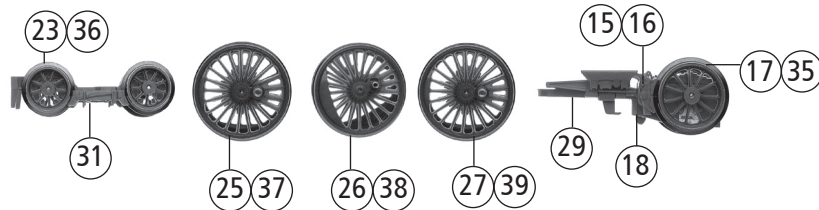
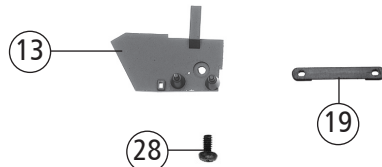
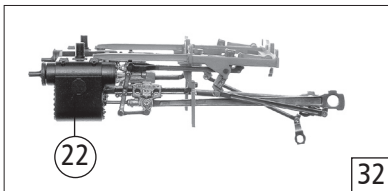
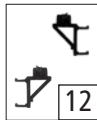
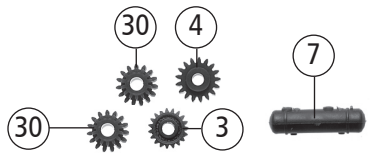
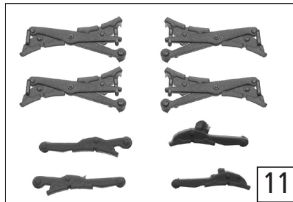
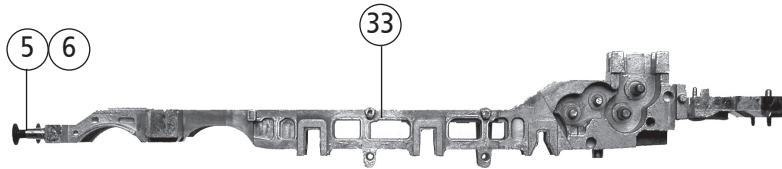
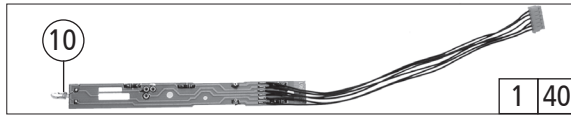


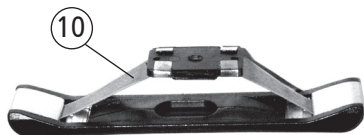
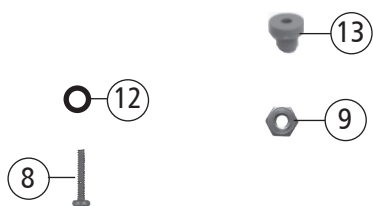
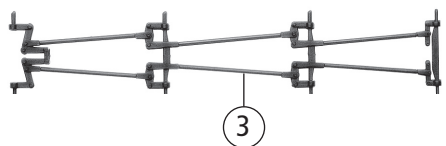
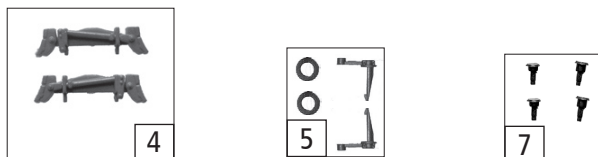
Pos. Nr. Pos.no.	Beschreibung Description	Art.-Nr. Art.no.	Preisgruppe Price bracket
1	Schraube M ,2X6 mm Screw M ,2X6 mm	114828	3
2	Beilagscheibe Washer	86108	3
3	Lager für Schneckenachse Worm gear axle bearing	89749	6
4	Ölkanne Oil can	92453	4
5	Schneckensatz Worm gear set	100132	13
6	Vorwärmepumpe Pre-heater pump	105962	4
7	Drahtstange Thread rod	105963	4
8	Drahtstange Thread rod	105964	4
9	TS-Kessel Parts set boiler	105967	9
10	Teilesatz Kessel Parts set boiler	107213	12
11	Kardanwelle und Kardanhülse Cardan shaft and cardan bearing	111765	4
12	Teilesatz Kessel Parts set boiler	111774	9
13	Stirntreppe Front treadle	111783	4
14	TS - Lichtleiter Lok und Tender Parts set light conductor loco and tender	111784	11
15	Kesselboden Boiler bottom	111790	8
16	Ventilleitung links Valve wiring left	111808	3
17	TS - Ösen, Ventile, Leitung Part set of eyelet, valves & lines	111809	12
18	Ventilabdeckhaube und Schaltstangenventil Valve cover and control rod valve	111810	8
19	Generator und Rauchfang kurz Generator and long chimney	111820	6
20	Ventil und Lokpfeife Valve and loco whistle	111822	6
21	TS - Kesselstangen 5-teilig Part set of boiler rods 5-parts	111823	12
22	Sandkasten - UT Sand box	111825	3
23	Abdeckhaube Umlauf Cover plate for running board	111826	3
24	Rohr Pipe	111893	3
25	Schneckenkammerdeckel Worm gear cover	111987	4
26	Lokgewicht Loco weight	114971	8
27	TS - Lokradkontakt rechts und links Parts set loco wheel contact right and left	122376	7
28	TS - Leitungen Part set wiring	122377	10
29	TS - Fenster links u. rechts Part set window left and right	122522	6
30	Laufblech kpl. mit Kontakten Running board with contacts	123619	12
31	Kessel komplett Betr. Nr. 001 133-8 Boiler assembly No. 001 133-8	142578	36
32	Führerh. lack. u. bedruckt Betr. Nr. 001 133-8 Driver's cab painted+ printed No. 001 133-8	142579	19
33	Tafelsatz Lok und Tender Set of panels loco and tender	142580	12
34	Umlaufblech Running board	111824	12
35	Seuthekontakt 1 und 2 Seuthe contact 1 and 2	131410	6
36	Seuthekontakthalter Seuthe contact holder	131411	4
37	Steckteilesatz 3 Part set of plug-in parts 3	105960	9
<b>Sound</b>			
38	Lautsprecher Loudspeaker	129524	14
39	Lautsprecherplatine Loudspeaker printed circuit board	128481	10
40	GF -Schraube M1,6x4 mm GF - Screw M1,6x4	114850	3

Änderungen in Konstruktion und Ausführung vorbehalten  
We reserve the right to change the construction and specification

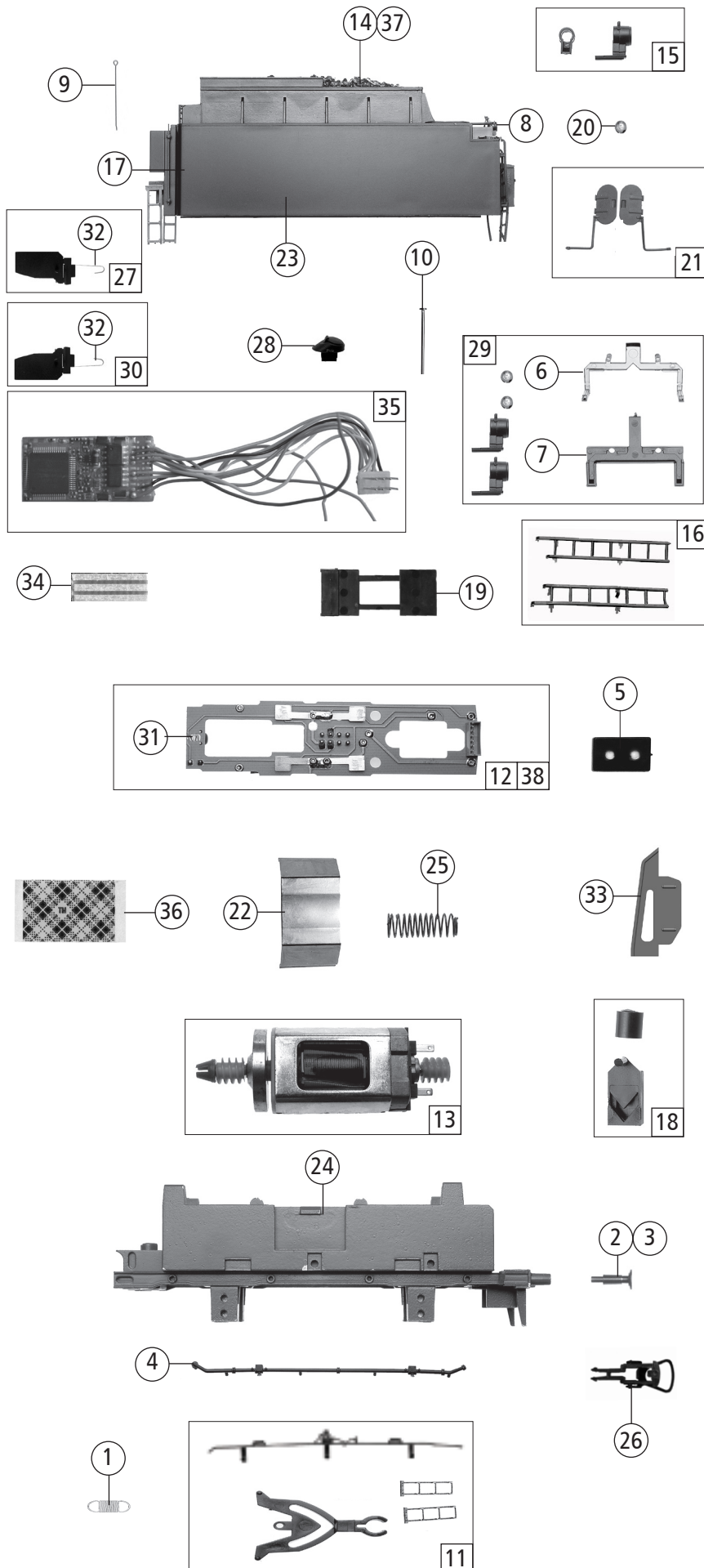
<b>72198</b>	DB	BR 01	=	
<b>72199</b>			=	🔊
<b>78199</b>			~	🔊

Pos. Nr. Pos.no.	Beschreibung Description	Art.-Nr. Art.no.	Preisgruppe Price bracket
1	Lokplatte komplett Printed circuit board assembly	111776	20
2	Druckfeder Pressure spring	86271	4
3	Zahnrad Z=19/M=0,4 Gear wheel Z=19/M=0,4	86417	3
4	Schneckenzahnrad Z=15/14 Worm gear wheel Z=15/14	86490	5
5	Puffer rund flach Buffer round flat	88502	5
6	Puffer rund gewölbt Buffer round curved	88503	5
7	Luftdruckbehälter links Left air tank	92189	4
8	Luftdruckbehälter rechts Right air tank	92190	4
9	Ansatzschraube M2x8/3,2 mm Flanged screw M2x8/3,2	100101	4
10	Drahtlampe T1 16V/30 mA Bulb with leads T1 16V/30mA	109321	8
11	TS - Bremsbacken Part set of brake shoes	105939	12
12	Treppe links und rechts Treadle left and right	105940	4
13	Getriebedeckel lack. Gear cover painted	105944	12
14	Scheibe Washer	105969	3
15	Bremsbacke links Brake shoe left	106037	4
16	Bremsbacke rechts Brake shoe right	106038	4
17	Nachlaufadsatz Carrying wheelset (rear)	137527	10
18	Indusi Einrichtung Indusi interior	110726	4
19	Kabelhalterung Cable fixation	111766	3
20	Kuppelstange links Coupling rod left	111769	7
21	Kuppelstange rechts Coupling rod right.	111770	7
22	Zylinderblock Cylinder block	111785	12
23	Vorlaufadsatz Carrying wheelset (front)	137525	10
24	Griffstange Hand-rail	112796	3
25	Kuppelradsatz 1 mit Achslager Coupled wheelset 1 with axle bearing	114186	12
26	Treibradsatz 2 mit Achslager Driving wheel 2 with axle bearing	114187	12
27	Kuppelradsatz 3 mit Zahnrad Coupled wheelset 3 with gear wheel	114188	12
28	GF-Schraube M2x4 mm GF - Screw Mx4	114877	3
29	Nachlaufgestell Set of carrying wheels (rear)	115552	3
30	Zahnrad Z=16 Gear wheel Z=16	117617	3
31	Vorlaufgestell Set of carrying wheels (front)	122372	8
32	Steuerung komplett Reversing gear complete	139020	36
33	Lokgrundrahmen Betr. Nr. 001 133-8 Loco basic frame No. 001 133-8	142570	16
34	Steckteilesatz 4 Part set of plug-in parts 4	105961	9
<b>AC-Wechselstrom</b>			
35	Nachlaufadsatz AC Carrying wheelset (rear) AC	108313	9
36	Vorlaufadsatz AC Carrying wheelset (front) AC	112108	9
37	Kuppelradsatz m. Achslager AC Coupled wheelset with axle bearing AC	114218	12
38	Treibradsatz m. Achslager AC Driving wheel with axle bearing AC	114219	12
39	Kuppelradsatz mit Zahnrad AC Coupled wheelset 3 with gear wheel AC	114220	12
40	Lokplatte komplett AC Loco printed circuit board assembly AC	111831	21

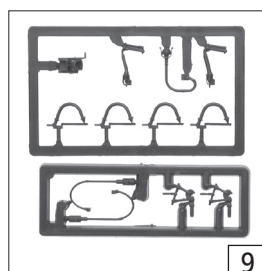
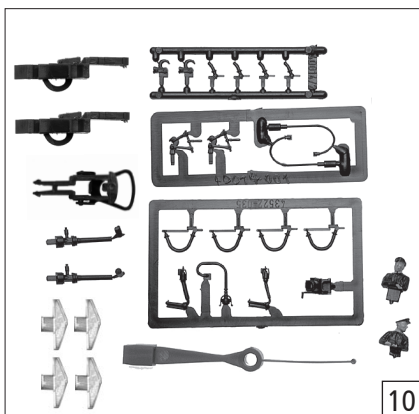
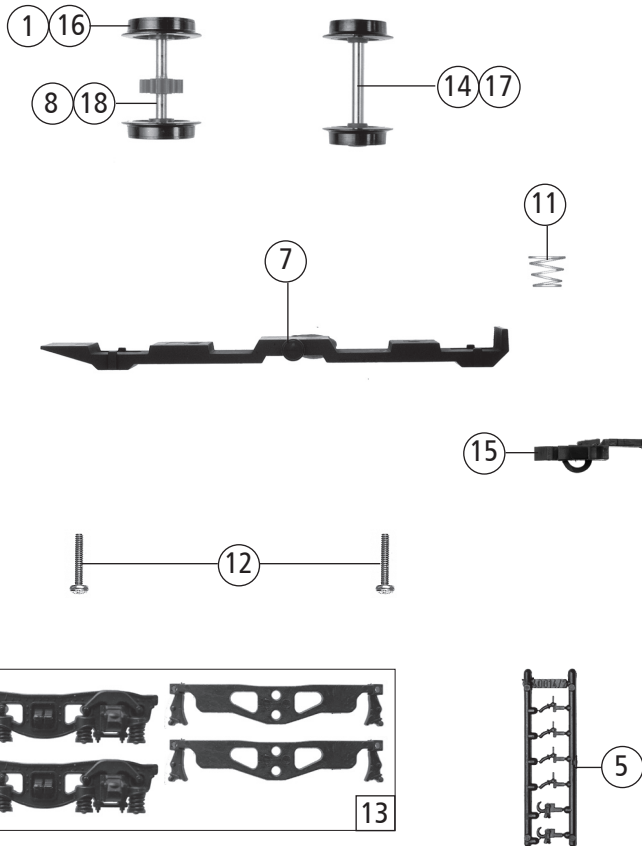
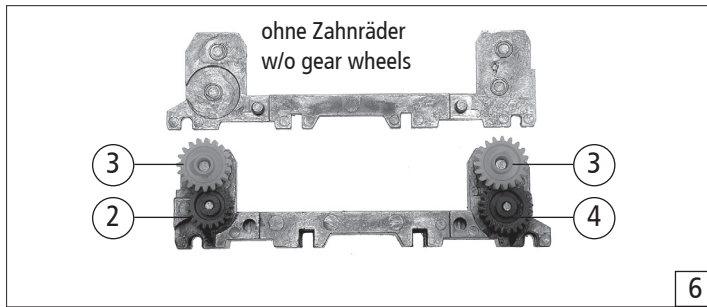




Pos. Nr. Pos.no.	Beschreibung Description	Art.-Nr. Art.no.	Preisgruppe Price bracket
72198	DB BR 01	=	
72199		=	🔊
78199		~	🔊
1	Schraube M2X25 mm Screw M2X25	115533	3
2	Lokboden Loco bottom	105938	12
3	Bremsgestänge Brake rigging	105945	7
4	Bremsbackensatz Vorlaufgestell Set of brake shoes f. carrying wheels (front)	111828	6
5	TS - Steuerung Part set reversing gear	114180	8
6	GF-Schraube M2x5 mm GF- Screw Mx5	114966	3
7	TS - Stoppel Part set plugs	137522	6
<b>AC-Wechselstrom</b>			
8	Schraube M1,6x10 mm Screw M1,6x10	85699	3
9	Sechsk. Mutter A M1,6 Countersunk screw Mutter A M1,6	86004	3
10	Schleifer Center pick-up	86033	14
11	Lokboden AC Loco bottom AC	106204	12
12	Scheibe Washer	112681	3
13	Stoppel Plug	114977	3



Pos. Nr. Pos.no.	Beschreibung Description	Art.-Nr. Art.no.	Preisgruppe Price bracket
72198	DB BR 01	=	
72199		=	🔊
78199		~	🔊
1	Zugfeder Draw spring	86208	3
2	Puffer rund flach Buffer round flat	88502	5
3	Puffer rund gewölbt Buffer round curved	88503	5
4	Tenderleitung Tender wire	94535	5
5	Brückenstecker Jumper	100644	6
6	Lichtleiter Tender Light conductor tender	105975	4
7	Lampenhalter Lamp support	105978	3
8	Spitzenlicht Tender Tender headlight	107216	3
9	Tender-Griffstange Tender hand-rail	108591	4
10	Drahtstift Tack	110641	4
11	TS - Tender Part set tender	111767	6
12	Tenderplatine kpl. Printed circuit board assembly for Tender	111786	23
13	Motor Motor	111787	28
14	Kohleaufsatz Coal stacking frame	142576	10
15	TS - Tenderlampen Part set for Tenderlamp	111804	6
16	Tender - Heckleitersatz Set of rear tender ladders	111805	6
17	Tenderdrahtstange Tender thread rod	111806	4
18	Platinenhalter, Tenderkupplung PCB holder, tender coupling	111829	6
19	Modulhalter Module support	111877	3
20	Linse klein Lens short	111891	3
21	Wasserklapensatz Water hatch set	120293	5
22	Motorspange Motor clip	121691	5
23	Tendergehäuse Betr. Nr. 001 133-8 Tender body complete No. 001 133-8	142575	20
24	Tendergrundrahmen Tender basic frame	142577	14
25	Bürstenfeder Spring	114197	3
26	Standardkupplung Clip-in exchange coupling	89246	6
27	Tendertüre rechts kpl. Tenderdoor right complete	114196	7
28	Einfüllstutzen Filler neck	116870	3
29	Tenderlampensatz Tender lamp set	113236	12
30	Tendertüre links kpl. Tenderdoor left complete	114195	7
31	Drahtlampe T1 16V/30mA Bulb with leads T1 16V/30mA	109321	8
32	Tendertürfeder Tenderdoor spring	115554	3
33	Stützblech Support metal sheet	137536	5
<b>Sound</b>			
34	Lötverbindung Soldered connection	131427	5
35	Sounddecoder Sounddecoder	129800	39
36	Doppelseitiges Klebeband Double sided adhesive tape	112629	3
37	Kohleaufsatz Tender Tender coal stacking frame	141443	12
<b>AC - Wechselstrom</b>			
38	Tenderplatine kpl. AC Tender printed circuit board AC	111839	24



Pos. Nr. Pos.no.	Beschreibung Description	Art.-Nr. Art.no.	Preisgruppe Price bracket
72198	DB BR 01	=	
72199		=	🔊
78199		~	🔊
1	Hafrings.10Stk.10,3-12,8mm Traction tyres set 10,3-12,8mm	40069	---
2	Zahnrad Z=21 G/M=0,4 Gear wheel Z=21 G/M=0,4	86414	3
3	Schneckenzahnrad doppelt Z=16/17 Gear wheel double Z=16/17	86419	6
4	Zahnrad Z=24/M=0,4 Gear wheel Z=24/M=0,4	86516	3
5	Atrappenrahmen klein Push in part set short	107808	4
6	Getriebesatz ohne Zahnradern Gear set without gear wheels	108262	11
7	Getriebeboden Gear bottom	108263	9
8	Radsatz mit Zahnrad u. Hafringen Wheelset with gear wheel and 2 tract.tyres	108265	12
9	Zubehörrahmensatz Set of accessory frames	108322	7
10	Zurüstbeutel Bag with accessories	139028	16
11	Feder Spring	86234	3
12	GF-Schraube M 2x10 mm GF - Screw M2X10	114854	3
13	Tenderblenden und Bremsbackensatz Tender bogie frame and set of brake shoes	117467	5
14	Radsatz o. Hafring o. Zahnrad Wheelset w/o gear w/o tractions tyres	121877	9
15	Kurzkupplung - Vorentkupplung Short coupling- pre-uncoupling	115550	6
<b>AC-Wechselstrom</b>			
16	Hafrings.10Stk. 10,3-12,4mm Traction tyres set	40074	---
17	Radsatz ohne Zahnrad ohne Hafring AC Wheelset w/o gear w/o tractions tyres AC	108304	10
18	Radsatz mit Hfafringen mit Zahnrad AC Wheelset with 2 tractions tyres with gear AC	108305	12

Ersatzteile erhalten Sie direkt unter [www.roco.cc](http://www.roco.cc), bei Ihrem Fachhändler oder Ihrer Landesvertretung:  
Spare parts can be ordered directly at [www.roco.cc](http://www.roco.cc) and from your local dealer or country representative.